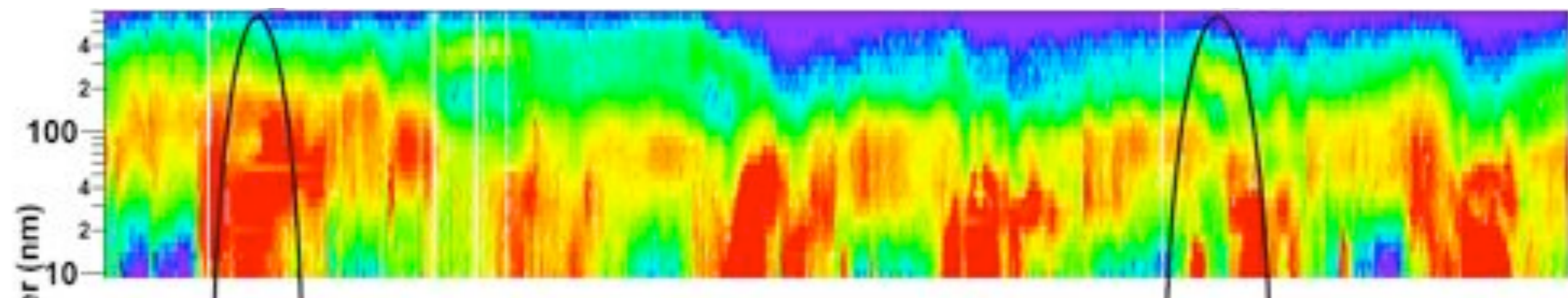


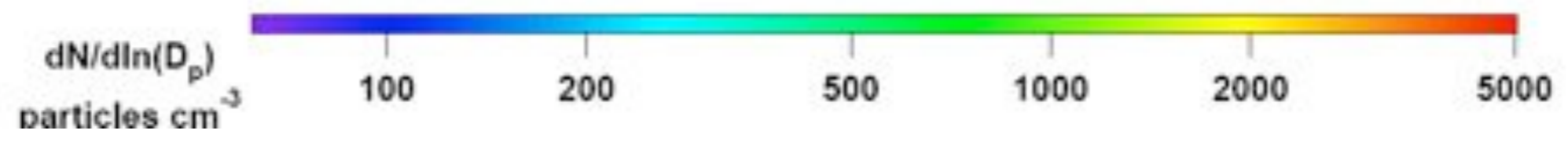
Figures from:

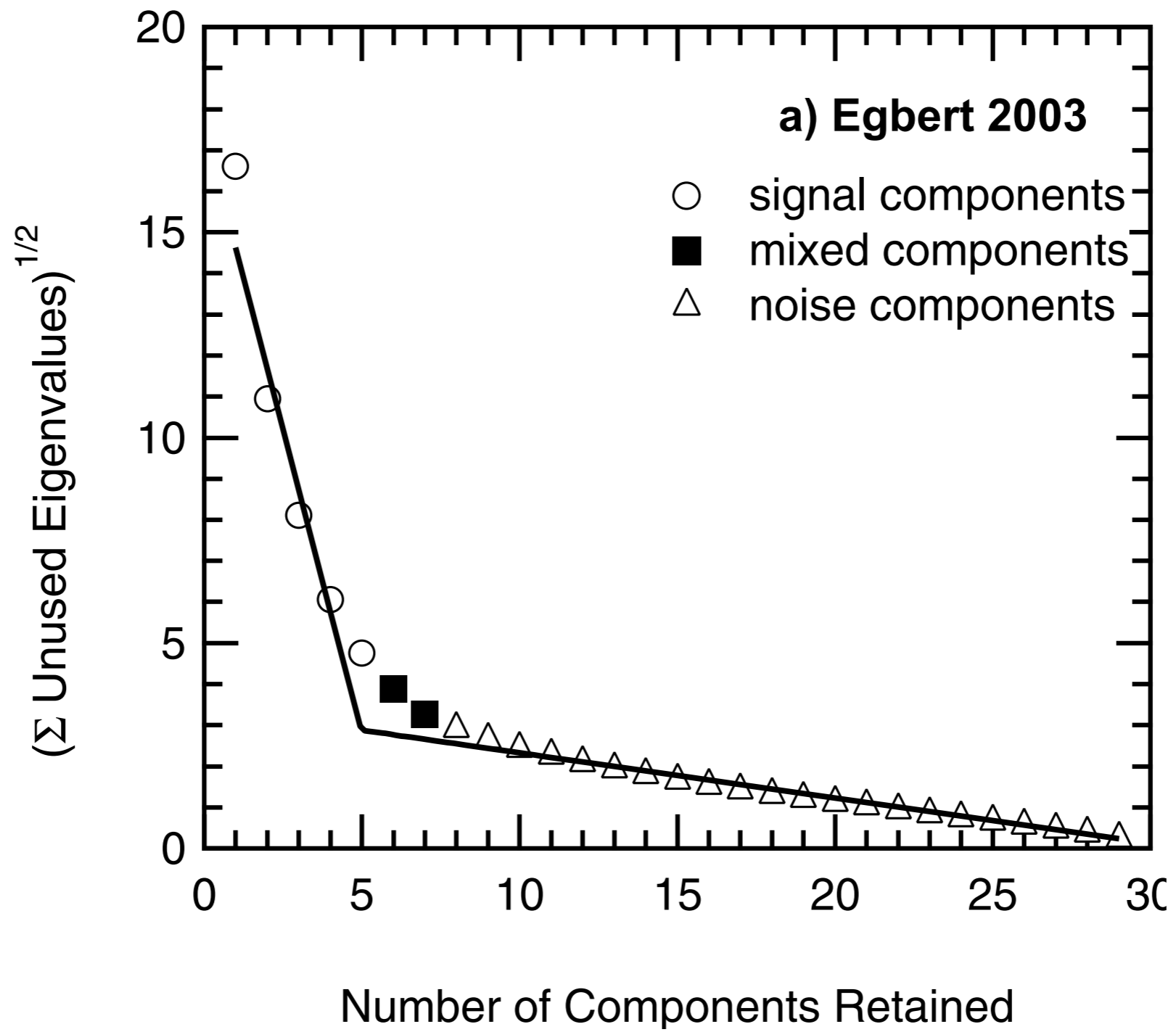
Turk & Pentland, "Eigenfaces for Recognition." *Journal of Cognitive Neuroscience* **3**:1, 1991.

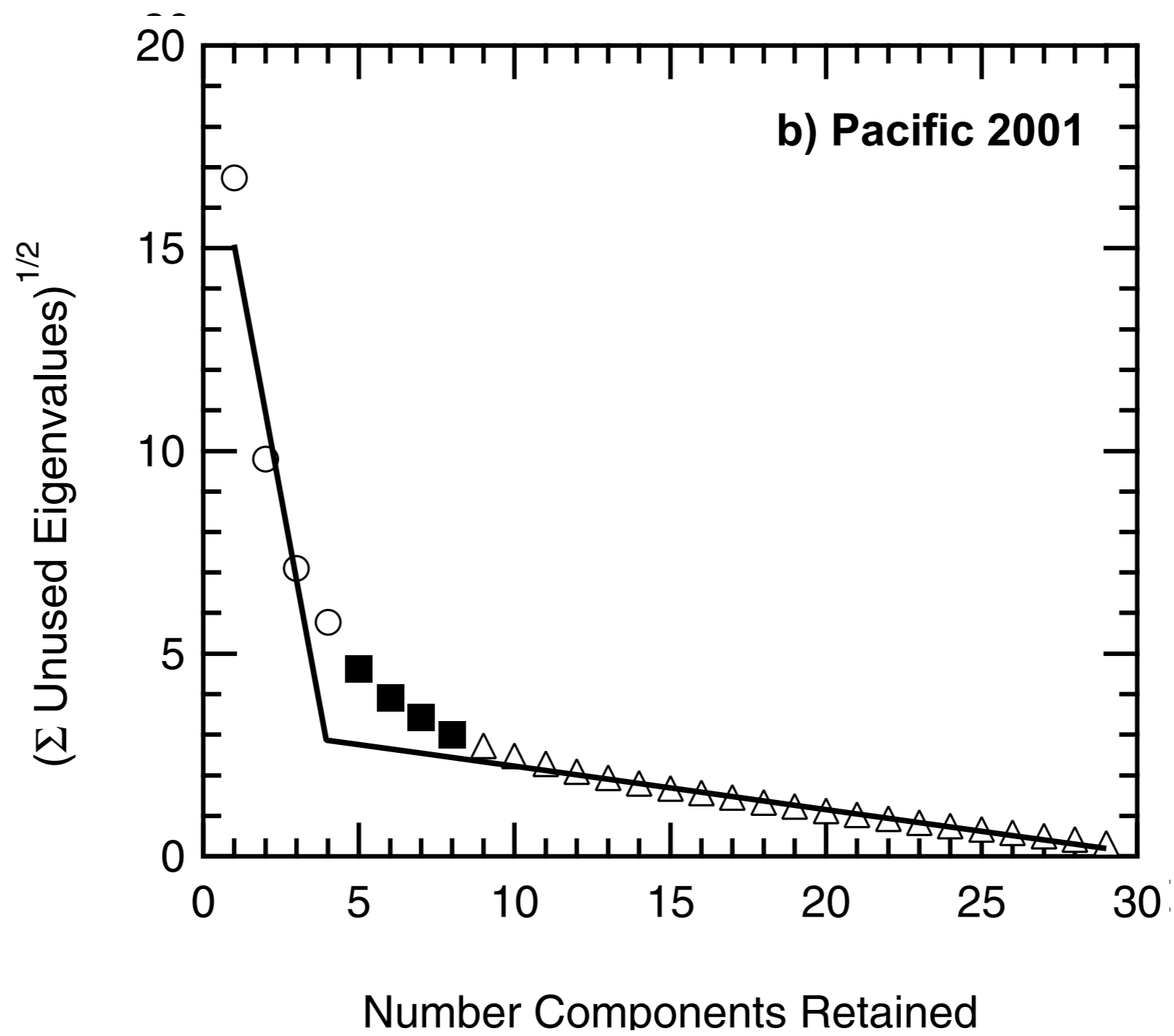
Chan & Mozurkewich, "Simplified representation of atmospheric aerosol size distributions using absolute principal components analysis." *Atmospheric Chemistry and Physics* **7**, 875–886, 2007.

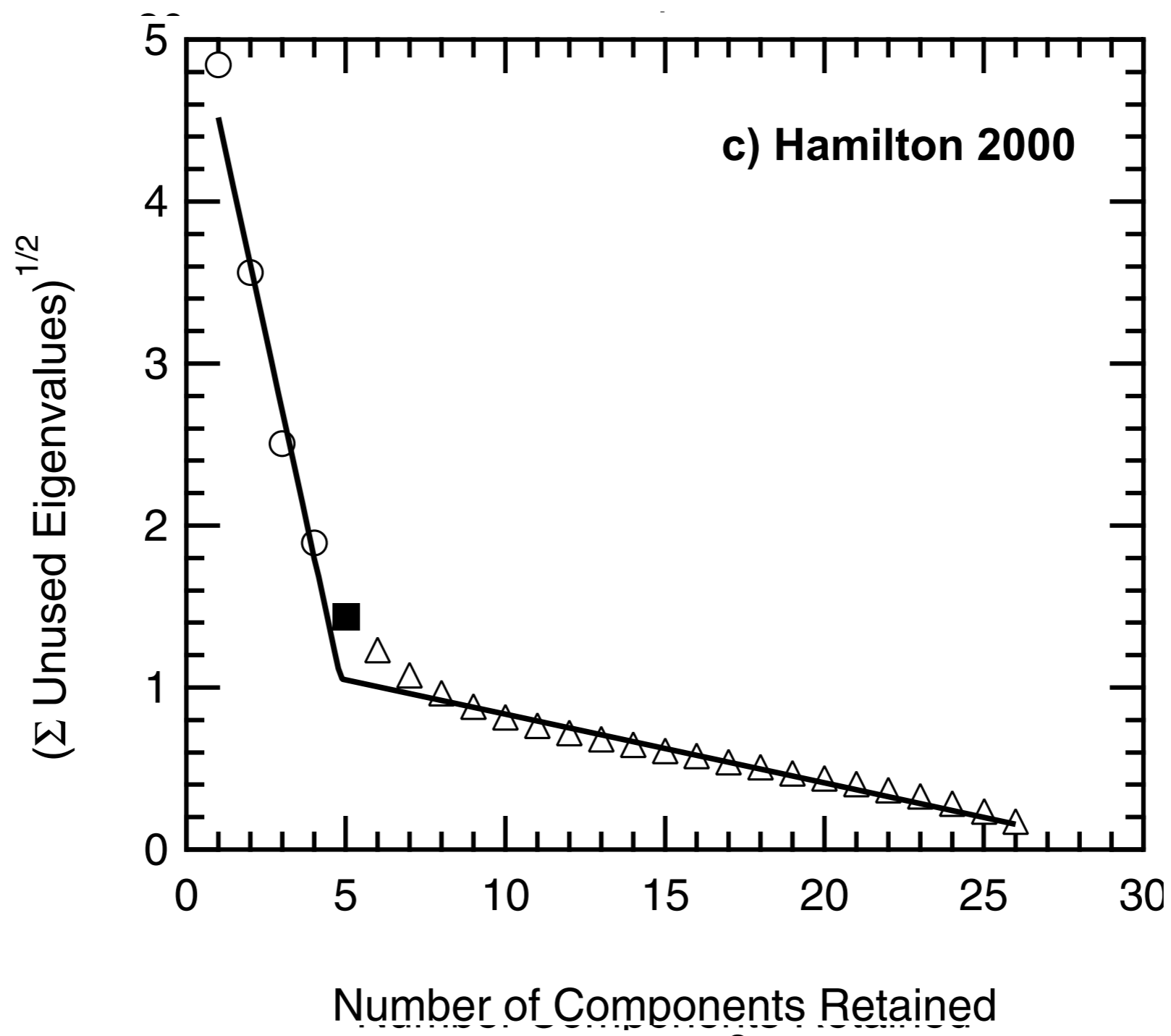


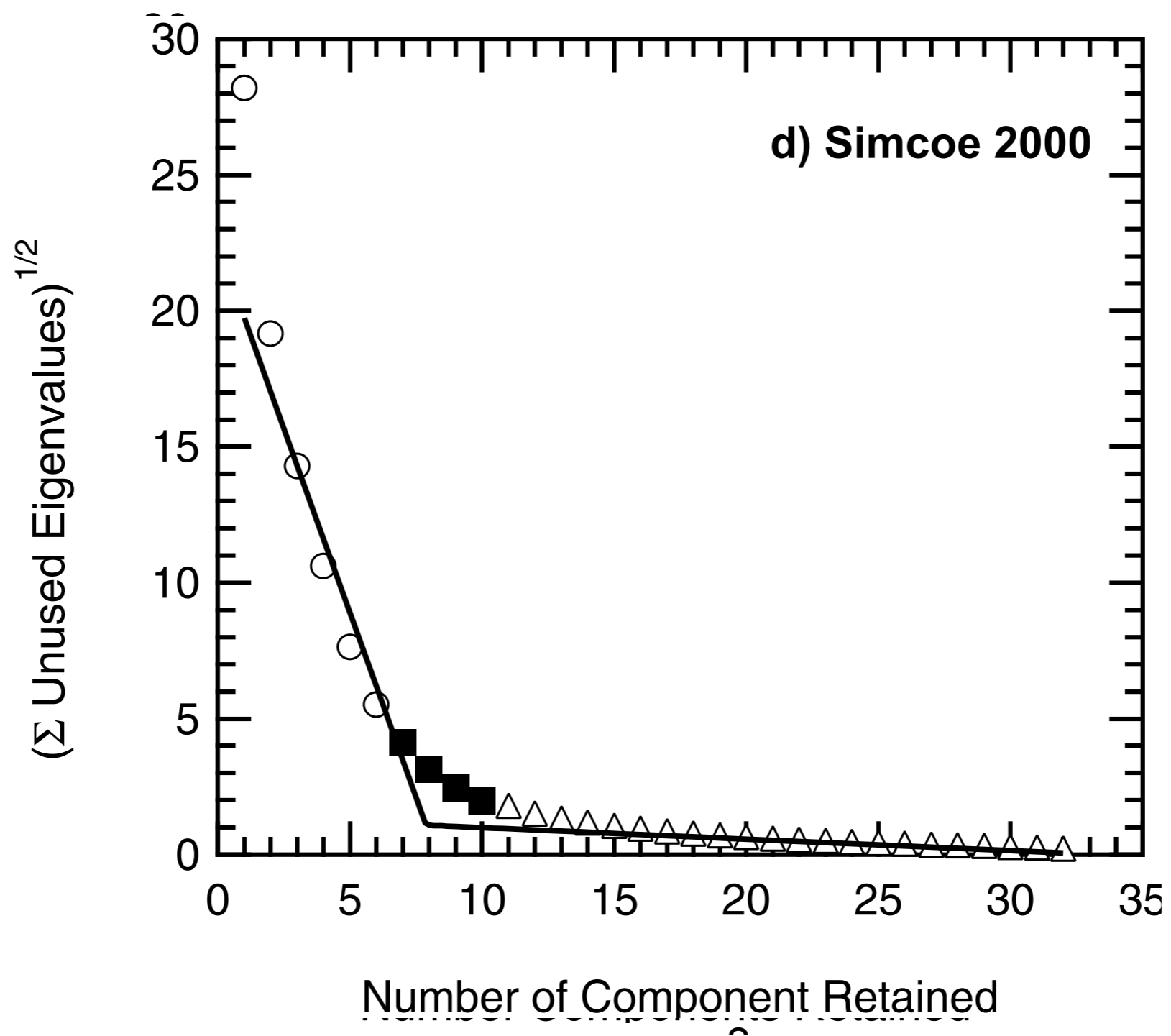
Particle Diameter (nm)

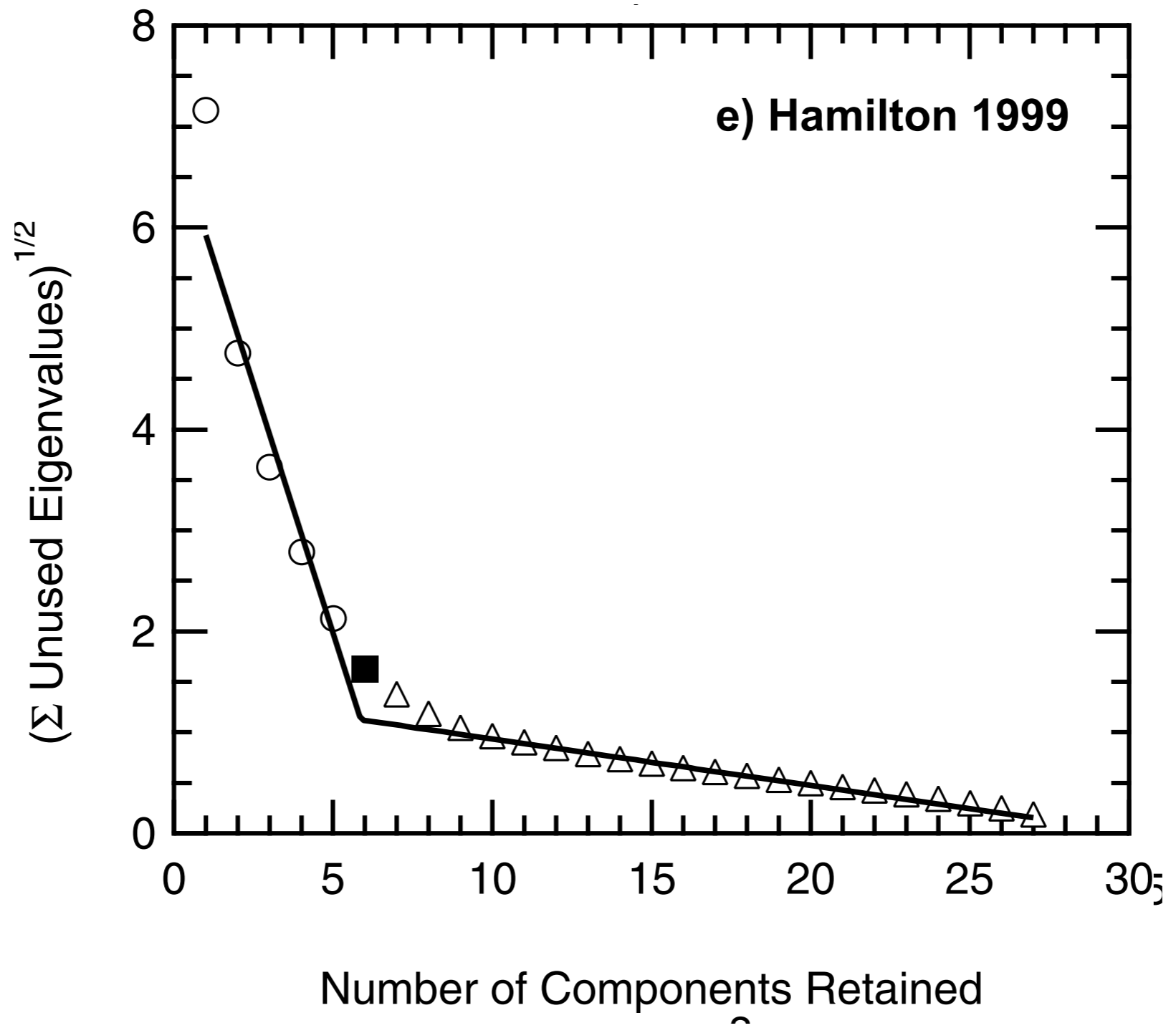


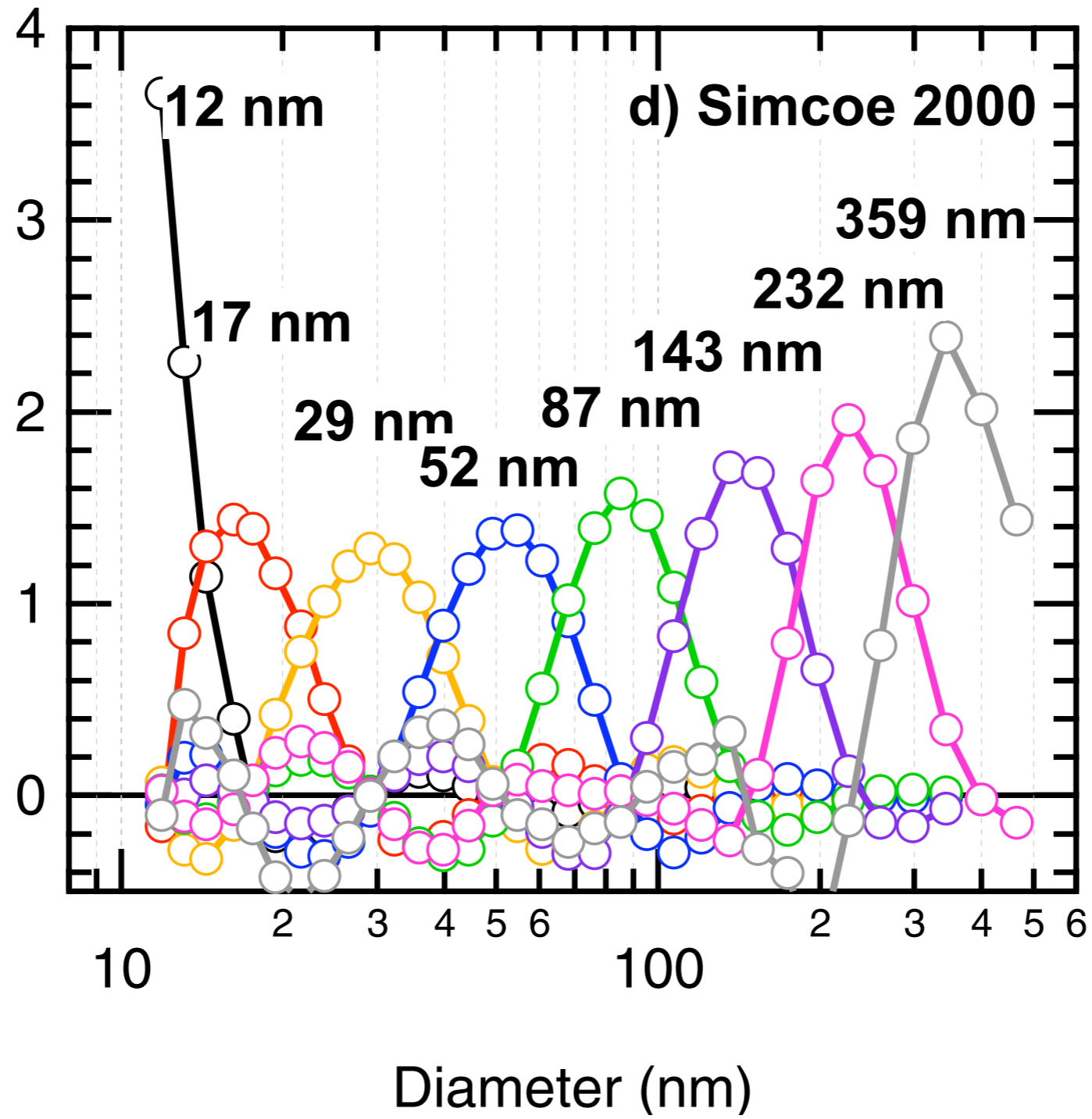












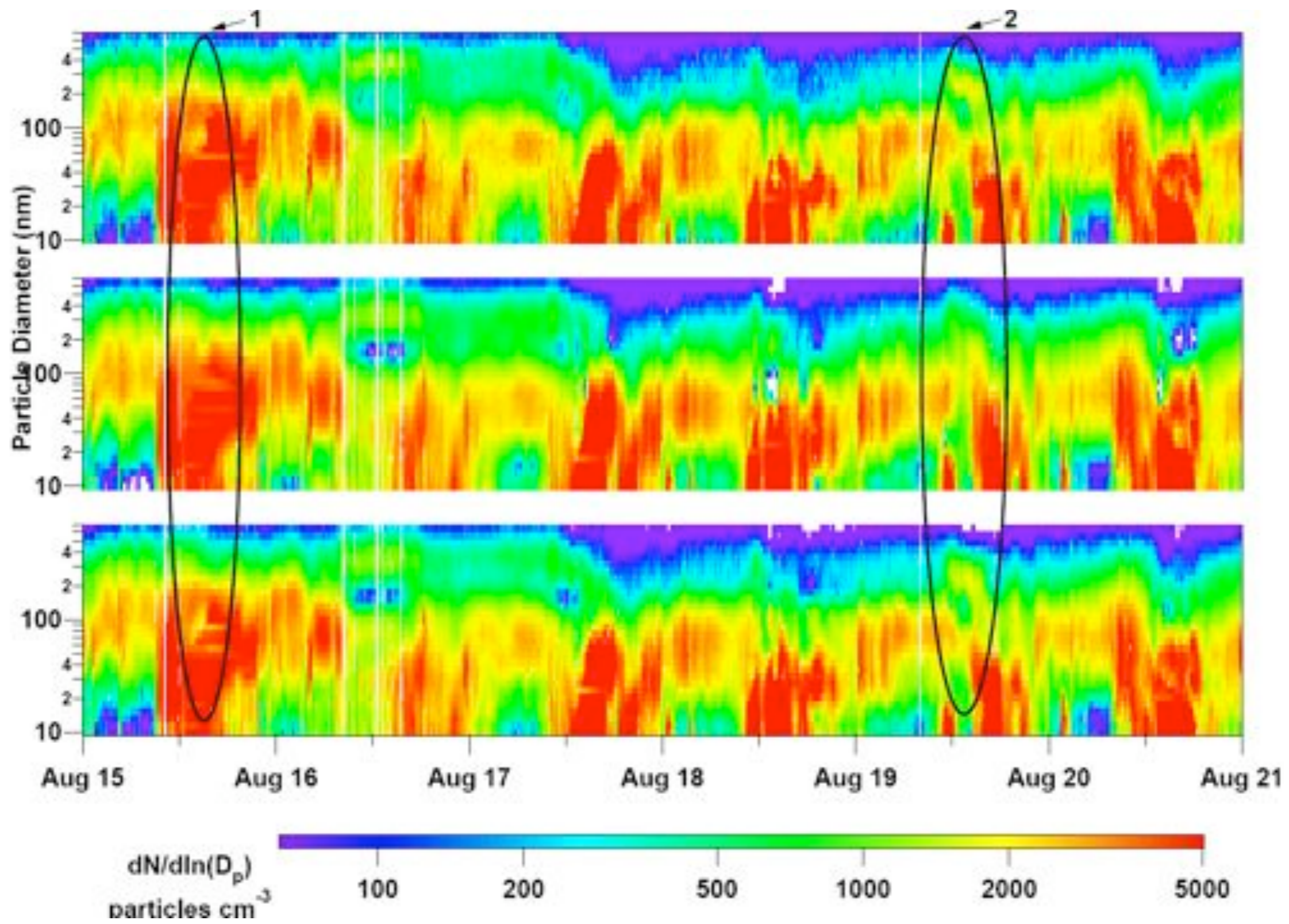




Figure 1. (a)Face images used as the training set.



Figure 1. (b) The average face \bar{Y} .



Figure 2. Seven of the eigenfaces calculated from the input images of Figure 1.



Figure 3. An original face image and its projection onto the face space defined by the eigenvectors of Figure 2.

Figure 4. Three images and their projections onto the face space defined by the eigenfaces of Figure 1. The relative measures of distance from face space are (a) 29.8, (b) 58.5, (c) 5217.4. Images (a) and (b) are in the original training set.



